



Available in 80 and 120 Gallon Side Connect and Top Connect Models

➤ 6-Year Limited Tank and Parts Warranty



- Anode rod equalizes aggressive water action for prolonged tank life
- Automatic temperature control
- Brass drain valve
- Choice of two models...storage tank or single element water heater, both specially equipped for installation with residential direct solar systems
- Cold water inlet brings cold water to tank bottom to prevent mixing with heated water
- Cold water inlet, hot water outlet, relief valve and anode rod at top of tank for easy access and fast, economical installation
- Collector feed and return fittings located at front of tank for convenient installation
- Energy Factor and Average Annual Operating Costs based on D.O.E. (Department of Energy) test procedures. D.O.E. national average fuel rate electricity 8.41¢/KWH.
- High efficiency heating element
- Isolated tank design for better heat retention
- Over temperature protector
- Patented R-Foam® insulation process
- Porcelain enamel lining resists corrosion and prolongs tank life
- Special threaded stud located near the outlet for attachment of tank sensors

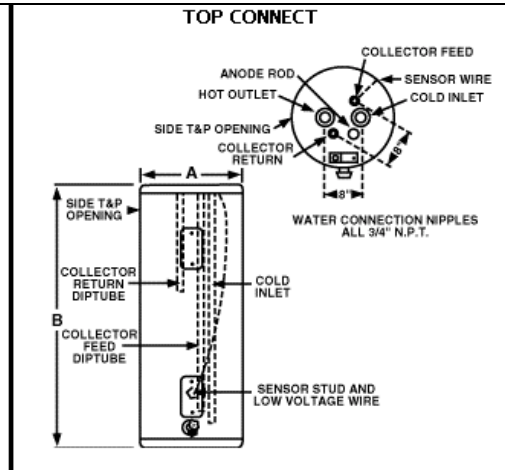
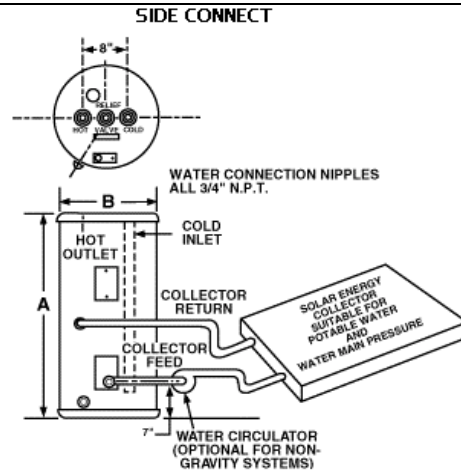


DESCRIPTION			DIMENSIONS			ENERGY INFORMATION	
CONN. LOCATION	GAL. CAP.	MODEL NUMBER	MAXIMUM WATTAGE UPPER	TANK HEIGHT A	DIAMETER B	APPROX. SHIP WT. (LBS.)	APPROX. R-FACTOR
Top	80	81VR80TC-1 RSTCR80-1 ^{1,2,3,4,5}	6000 W	58-3/4	24-1/2	192	R-17.3

¹All units furnished standard 240 volt AC.
²For single element, change "D" to "S".
³Solaraide models meet all current state requirements for solar storage tanks.
⁴The tanks are porcelain enamel lined and are designed to operate up to 150 PSI.
⁵Units are shipped with a 4500 watt element. If heating elements of different wattages than those shown are demanded by zone requirements, they must be specifically requested.

These units are designed to meet or exceed ANSI (American National Standards Institute) requirements and have been tested according to D.O.E. test procedures and meet or exceed the energy efficiency requirements of NAECA, ASHRAE standard 90, BOCA Code and all state energy efficiency performance criteria for energy consuming appliances.

Before purchasing this appliance, read important energy cost and efficiency information available from your retailer.



In keeping with its policy of continuous progress and product improvement. Rheem reserves the right to make changes without notice.